



Moguls slopes?
Not with us.

weber.floor 4640 Outdoor RepFlow
Highly flowable concrete repair mortar R 4
and levelling compound 10-80 mm



Little effort, great effect

weber.floor 4640 Outdoor RepFlow

**Small damages happen quickly -
and they can be repaired just as quickly.**

weber.floor 4640 Outdoor RepFlow is a cementious, plastic-modified levelling compound of class CT-C50-F7-AR1 and a concrete replacement mortar of class R 4 according to DIN EN 1504-3.

As a levelling compound on concrete substrates or as a repair mortar for holes or defects in concrete substrates, it can be used both indoors and outdoors.

His strength:

It can be used without problems on surfaces exposed to moisture, frost and de-icing agents.

The special advantages of **weber.floor 4640 Outdoor RepFlow**

- concrete repair mortar and levelling compound in one
- pumpable and flowable
- very high freeze-thaw resistance

Substrate testing / preparation



1.
Surface tensile strength of 1,5 N/mm² must be ensured by suitable measures such as blasting or milling.



2.
The area is to be prepared with suitable measures, such as chiseling out small, heavily damaged areas.



3.
Clean the prepared surface well, e.g. by vacuuming or pressure water jetting.



4.
The substrate must be sound, load-bearing, dry and free from all components that may impair adhesion.



5.
The largest grain of the subsoil should be exposed.

Application tip Fill holes

weber.floor 4640 Outdoor RepFlow can be used to repair holes and defects in concrete surfaces. The product is classified in the highest class R4 according to DIN EN 1504-3 and is therefore suitable for statically



1. priming

The primer **weber.prim 802** / **weber.floor 4716** must be mixed with water in a ratio of 1:3. A more concentrated primer is not to be used.



2. priming

The primer is tipped out onto the substrate in portions and massaged into the concrete substrate with a broom. Puddle formation must be avoided at all costs. Excess material can be taken up with a roller.



3. priming

As soon as the primer is completely dry and colourless, you can start working with **weber.floor 4640 Outdoor RepFlow**. This must be done after 48 hours at the latest.



4. mixing

When mixing by hand, place the prescribed amount of water in a mixing container. Then add **weber.floor 4640 Outdoor RepFlow** and mix for 2 to 3 min. with a suitable stirrer; after approx. 1 min. mix again during the maturing time.

relevant requirements according to the European standard. For medium loads, it can be used directly or combined with a suitable coating system.



5. application

Pour the material evenly onto the substrate and, if necessary, spread it using a suitable tool.



6. application

Smooth and remove the material with a suitable tool.



7. aftercare

The freshly laid surface is protect from draughts, direct sunlight and heat. Outdoors, the surface must be covered with a film or sprayed with a concrete curing agent.



8. result

After approx. 7 days the surface can be fully loaded. For additional coatings of the floor, please refer to the technical data sheet of **weber.floor 4640 Outdoor RepFlow**.

Application tip as levelling compound

In combination, the repair mortar is also suitable for levelling concrete substrates such as courtyards, garages, terraces, car-ports and basements. It is both pumpable



1. priming

The primer **weber.prim 802 / weber.floor 4716** must be mixed with water in a ratio of 1:3. A more concentrated primer is not to be used.



2. priming

The primer is tipped out onto the substrate in portions and massaged into the concrete substrate with a broom. Puddle formation must be avoided at all costs. Excess material can be taken up with a roller.



3. priming

As soon as the primer is completely dry and colourless, you can start working with **weber.floor 4640 Outdoor RepFlow**. This must be done after 48 hours at the latest.



4. mixing

Mix **weber.floor 4640 Outdoor RepFlow** with the appropriate amount of water. Depending on the surface size, this can be manually by whisking in a bucket or mechanically by means of a m-tec duomix 2000.

and flowable and can therefore be quickly and easily installed at the respective site using the m-tec duomix 2000. For larger areas, the **weber.floor MixMobil** is also an option.



5. mixing

When mixing by machine, the consistency must be monitored regularly via a slump test. The use of a static truck agitator is required when pumping.



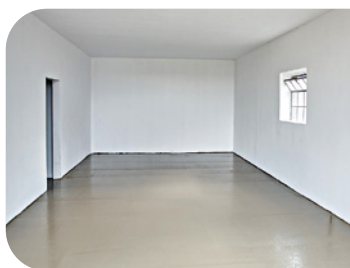
6. application

If necessary, set levelling pins to the desired height and distribute them over the surface. The material is installed in the desired layer thickness.



7. application

As soon as the desired layer thickness is reached, the material is beaten through with a buffing bar and then levelled across the surface with light buffing strokes.



8. aftercare

The freshly laid surface must be protected from draughts, direct sunlight and heat. In outdoor areas, the surface must be covered with a foil or sprayed with a concrete curing agent.

At **weber**, we believe that the **most important** in the building industry is to **care about people** and **their environment**.



Well-being

We care
For the well-being of people.



Empathy

We care

We care
about what matters to people.



Long-lasting

We care
about our long-term responsibility.

