



Safe, dry and radon-tight!

weber.tec Superflex 2K
Flexible, radon-tight, 2 component
bitumen thick coating



*Professional basement
exterior waterproofing*

**Step by step
on just one day**



Waterproofing for earth-contacting building parts **weber.tec Superflex 2K**

weber.tec Superflex 2K is a 2-component bitumen thick coating with German approval. CE-approved according to **DIN EN 15814**. Polymer-modified bitumen thick-coating according to **DIN 18533**. It is used for waterproofing basement walls, floor slabs, foundations and underground car park ceilings that are in contact with the ground. **Weber.tec Superflex 2K** can also be used under screeds for intermediate waterproofing of wet and damp rooms, not-inhabited balconies or terraces. The product can also be used for bonding polystyrene rigid foam boards.

Advantages of weber.tec Superflex 2K

- Economical and easy to use
- quickly resistant to rain
- crack-bridging and flexible
- resistant to water pressure from ground damp (W1-E) to pressure water (W2.1-E) according to DIN 18533 (German standard)





The substrate must be free of dirt, water-repellent substances and components that reduce adhesion. Break off edges and protruding parts.



The fast-setting, water-tight groove and patching mortar **weber.tec 933** is applied after pre-slurring the bonding bridge and immediately rounded off. This ensures an even layer thickness of the thick coating.



Building separation joints are sealed with **weber.tec Superflex B 240 E**, fleece laminated waterproofing tape. The tapes are bonded to the wall and smoothed over with the waterproofing in the edge area.



Penetrations (e.g. wastewater pipes) are integrated into the surface waterproofing using a special pipe penetration system (e.g. Doyma), depending on the water load.



The waterproofing is raised up the splash-water area, and the socket insulation system ensures seamless thermal insulation.



Once the waterproofing has dried thoroughly, apply the waterproofing protection **weber.sys 983**, a combined protection and drainage mat. The mat is fixed above the waterproofing and brought up to the ring drainage in the lower area. The excavation pit is then filled in.



Priming with **weber.tec 901**, diluted 1:10 with water at room temperature, to bind dust and create an evenly absorbent substrate.



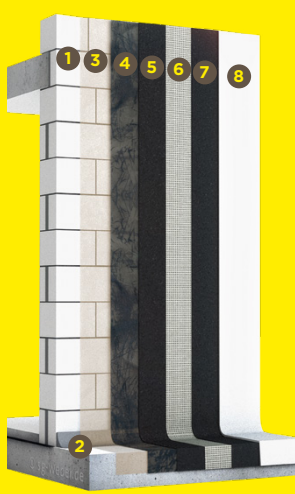
Once the primer has dried, scratch coat and fill with the thick bitumen coating **weber.tec Superflex 2K**.



Apply the first layer of **weber.tec Superflex 2K** using a trowel. The application thickness depends on the water load. For waterproofing against pressure water, apply the reinforcement mesh **weber.sys 981** fresh on fresh.



Apply the second waterproofing layer as soon as the first layer is no longer damaged.



System structure:

- 1 Mineral substrate
- 2 Grooving mortar **weber.tec 933**
Groove-and patching mortar
- 3 Primer **weber.tec 901**
- 4 Scratch coat **weber.tec Superflex 2K**
- 5 First waterproofing layer **weber.tec Superflex 2K**
- 6 Glass fibre fabric No. 2 **weber.sys 981**
- 7 Second waterproofing layer **weber.tec Superflex 2K**
- 8 Drainage and protective layer **weber.sys 983**

weber.tec Superflex 2K

Flexible, lightweight, radon-tight
2 component bitumen thick coating

The system-compatible product is complemented by:

- **Bitumen primer weber.tec 901**
Highly concentrated, solvent-free, universally applicable bitumen emulsion
- **Groove and patching mortar weber.tec 933**
in accordance with DIN 18533 (German standard)
Waterproof, fast-setting hollow, groove and patching mortar and bonding bridge
- **Glass fibre fabric weber.sys 981**
as an insert in thick coatings and for layer thickness control of thick bitumen coatings and reactive waterproofing
- **Drainage protection mat weber.sys 983**
as waterproofing protection and vertical drainage
- **End piece joint waterproofing tape weber.tec Superflex B 240 E**
for joint waterproofing in combination with Weber bitumen thick coatings and reactive waterproofing



PRINTED WITH
ECO-FRIENDLY INKS
FROM RENEWABLE
RESOURCES ON
100% RECYCLED PAPER



SAINT-GOBAIN WEBER GMBH
Willstätterstraße 60
40549 Düsseldorf
www.de.weber